



## Switchgear type RKS5-2/8 for rated voltage 500V



Switchgear type RKS5-2/8 is an electrical device designed for use in the underground mining pits in non-explosive conditions and on the ground.

Switchgear type RKS5-2/8 is designed for connecting and switching on receivers (especially fans) in the 3-phase mine grid with insulated star point on the transformer (system IT) of rated grid voltage of 500V.

Wires are connected to the switchgear via terminal clamps through cable glands.

Switchgear type RKS5-2/8 is equipped with power protections against short-circuits, overloads, lowering of the ground resistance.

### TECHNICAL DATA:

ingress protection  
supply rated voltage  
no of 500V outlets  
rated current of outlet  
weight  
dimensions

IP54  
500VAC, 50Hz  
2  
acc. to table 1  
80 kg  
1300 x 700 x 400mm (H x W x D)

Table 1

Switchgear Type	Maximum rated current outlet [A]		Rated current of clamps from supply side(Inz) [A]
	Outlets		
	I	II	
<b>RKS5-2/8</b>	70	70	400

Note: Load drains of the outlets can be adapted to the power of the load on request, however they can't exceed the values in table 1.

## CONSTRUCTION

Switchgear is composed of plate steel housing mounted on a support frame which allows the device to be hanged on a chain or placed on the ground.

## MODE OF OPERATION

The switchgear can operate in two control modes: LOCAL and REMOTE. The control mode is selected by changing the position of the switch located on the face of the switchgear into an LOCAL or REMOTE position.

In LOCAL control mode the 500V outlets are turned on/off by control buttons located on the face of the switchgear.

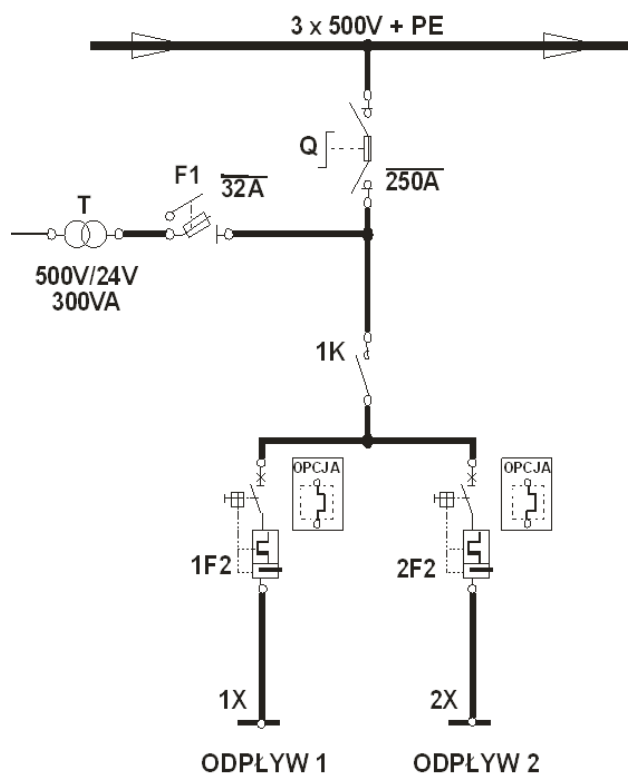
In REMOTE mode the outlets are turned on/off by control buttons located on the face of the external control cabinet.

Changing the position of the control switch into an BLOCKADE position causes turning off the outlets regardless of the mode of operation.

## SCHEMATIC DIAGRAM

### Legend:

Odplyw 1,2 – Outlet 1,2



Orders should be submitted in writing or by fax to the address:

 **Instal-Service PL**

Spółka z ograniczoną odpowiedzialnością  
Spółka komandytowa

58-506 Jelenia Góra, ul. Wrocławska 15a

tel. (+48 075) 64-57-950

fax. (+48 075) 64-57-951

e-mail: instal@instal-service.pl